



VILLAGE ESTATES



93 Main Road, Sidcup, Kent DA14 6ND

Tel: 0208 302 1002

www.village-estates.com

Email: sidcup@village-estates.com



SEMI DETACHED PERIOD HOME

FOUR PIECE FAMILY BATHROOM

**IN NEED OF SOME COSMETIC
IMPROVEMENT**

TWO RECEPTIONS

**55FT REAR GARDEN ONTO
CONSERVATORY**

**QUITE RESIDENTIAL ROAD
CLOSE TO AMENITIES**



30 Bedford Road
Sidcup, DA15 7JP

£525,000

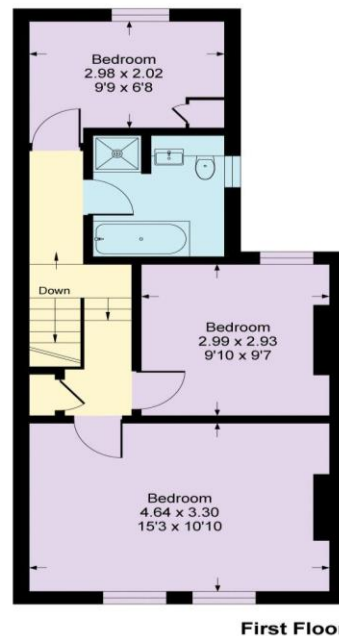
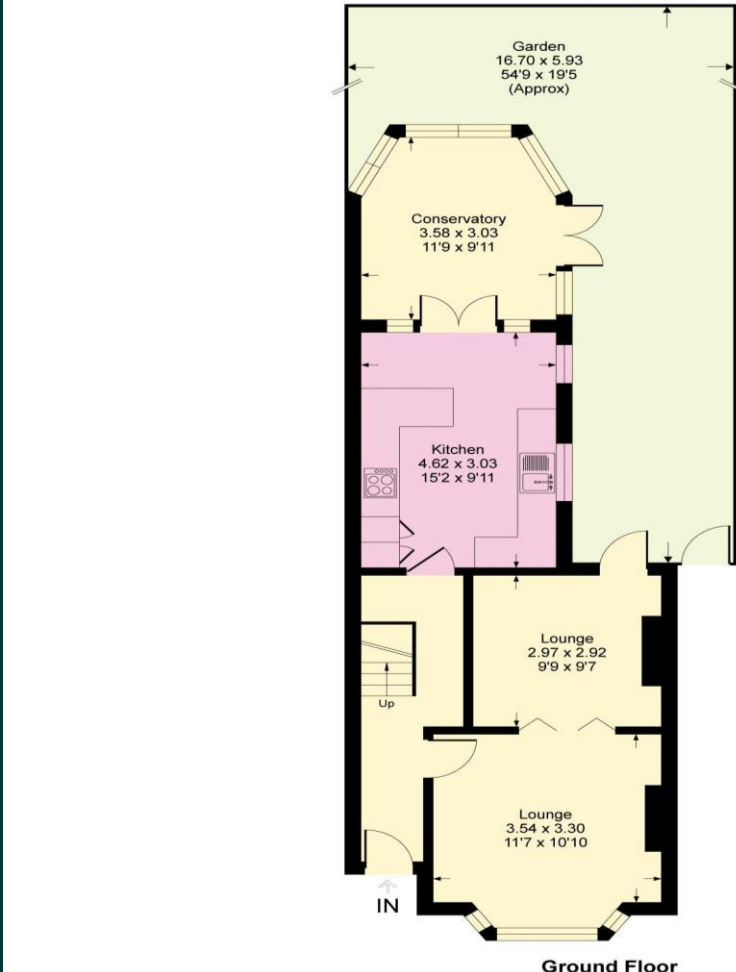
VICTORIAN three bedroom SEMI DETACHED house situated in a desirable area near to LONGLANDS PRIMARY SCHOOLS and popular local shops. With three well-proportioned bedrooms, TWO RECEPTION ROOMS and POTENTIAL TO EXTEND (STPP) we feel this would make for an excellent family home.

EPC RATING: D

COUNCIL TAX BAND: D

TENURE: Freehold

LEASE TERM: Not Applicable



CONSUMER PROTECTION FROM UNFAIR TRADING REGULATIONS 2008

Please note that any services, heating system or appliances have not been tested, and no warranty can be given or implied as to their working order. You are advised to obtain verification from your solicitor or surveyor. References to the tenure of a property are based on information supplied by the seller. We have not had sight of the title documents and a buyer is advised to obtain verification from their solicitor. Items shown in photographs are not included unless specifically mentioned within the sales particulars, but may be available by separate negotiation. Whilst every attempt has been made to ensure the accuracy of the floor plan contained here, measurements of doors, windows, rooms and any other items are approximate and no responsibility is taken for any error, omission, or mis-statement. We advise you to book an appointment to view before embarking on any journey to see a property, and check its availability. The accuracy of these details are not guaranteed and they do not form part of the contract.